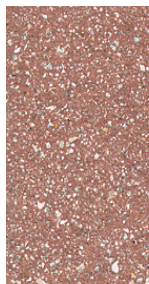
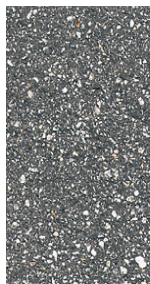


The eight standard colors shown are available in a wide range of paver sizes and thicknesses. Custom color blending can be accommodated, as well as, custom aggregate blending. Hanover's Tudor® Finish is an architectural texture which gives the surface a granite-like appearance. It is a surface equally suited to urban and municipal projects.



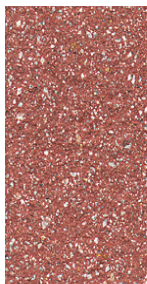
Quarry Red



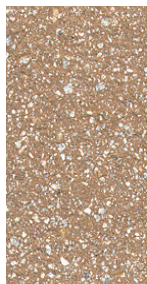
Charcoal



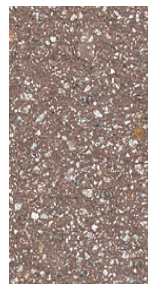
Natural*



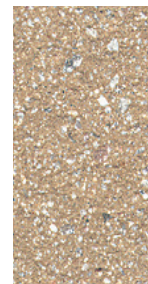
Red 15



Tan



Brown



Cream



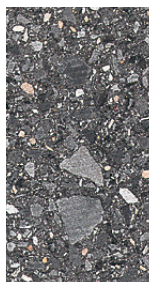
Limestone Gray

* Natural color Prest® Pavers have a tendency to vary in color within any given shipment. It may vary in shade from gray/buff to light gray, and even to a darker gray. This variance should be expected and considered normal for the Natural color Prest® Pavers.

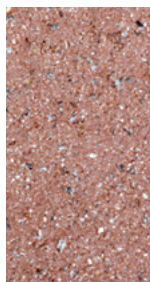
PLEASE NOTE: For stability of color, sealing is recommended. Two types of sealers are suggested – Hanover® Intensifying Sealer or Hanover® Natural Sealer.

Prest® Paver Product Data | CUSTOM COLORS WITH GROUND FINISH

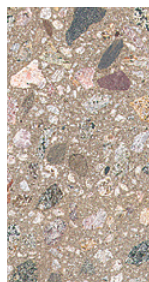
Texture is as important to the appearance of the installation as color and pattern. Hanover's Ground Finish provides a smooth surface revealing the aggregates beneath. Custom color and aggregate blending is available when quantities permit.



Super Black



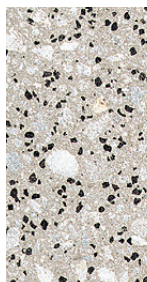
Matrix #1111



Matrix #1171



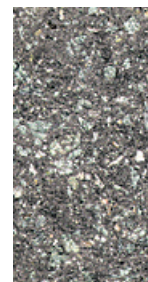
Matrix #1049



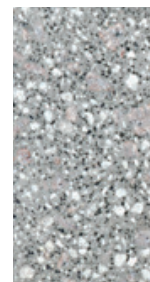
Matrix #1185



Matrix #1109



Matrix #1151



Matrix #1240

SLATEFACE® PREST® PAVER COLORS

The SlateFace® Paver has been designed to reproduce the texture, color and appearance of natural slate. Stocked in Hanover's BlueStone and Tennessee Flagstone colors, its irregular top surface was developed from actual sections of stone.



BlueStone
(#M2374)

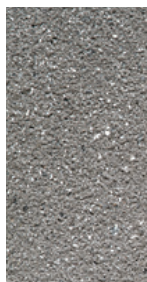


Tennessee Flagstone
(#M2343)

PLEASE NOTE: The color photos shown to the left are a representation of possible color blend and texture. The actual product may vary. Hanover's blended colors consist of several shades and will include some solid and some blended pieces.

CUSTOM COLORS WITH TUDOR® #13 FINISH

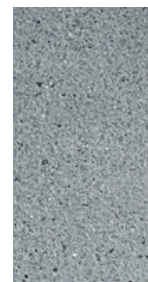
Hanover® Pavers are also produced in a Tudor® #13 finish which gives a delicate sandstone texture. A few available colors are shown below. Other custom colors can be ordered when quantities permit.



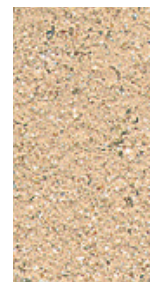
Matrix #1428



Matrix #1775

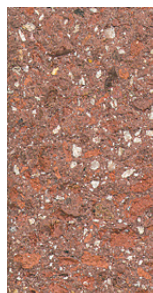


Matrix #2127

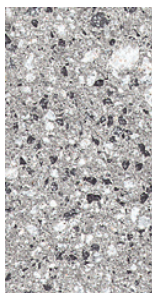


Matrix #1914

The blends shown below were developed by Hanover's efforts to respond to particular project requirements. Additional custom blending is available on special order when quantities permit. Hanover's Tudor® finish is a specialized texture designed to reveal the aggregates naturally. It gives the surface a granite-like appearance which adds slip resistant qualities to the paver.



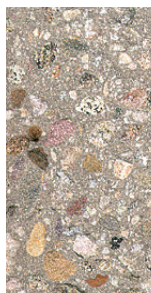
Matrix #1458



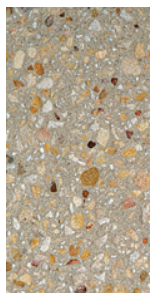
Matrix #1025



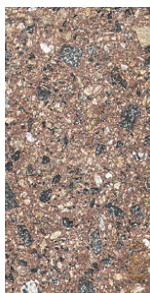
Matrix #115



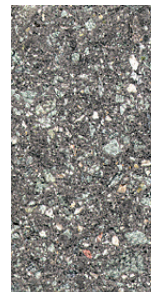
Matrix #1171*



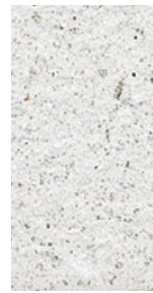
Antietam*



Matrix #1119



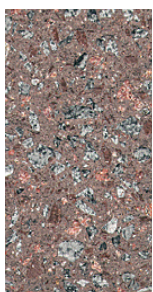
Matrix #1151*



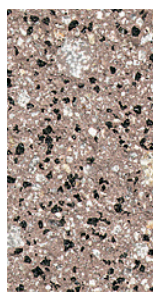
Glacier White



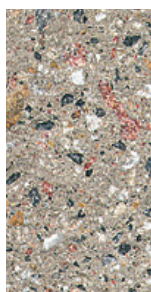
Matrix #1914



Matrix #1916*



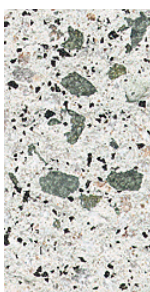
Matrix #1952



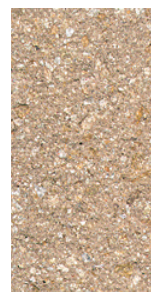
Matrix #1457



Matrix #1856



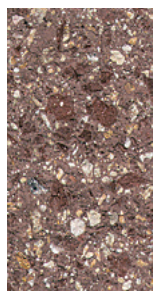
Matrix #1875*



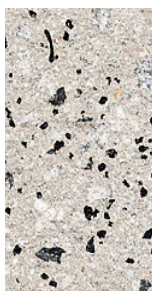
Matrix #1810



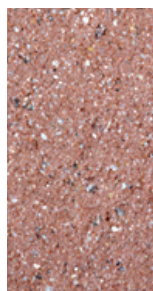
Matrix #1649



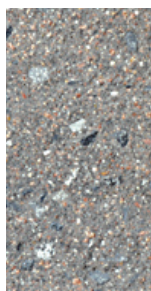
Matrix #1767



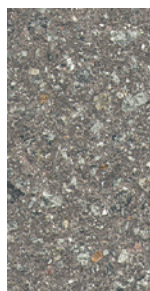
Matrix #1442



Matrix #1111*



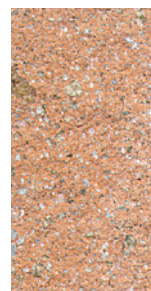
Matrix #1256



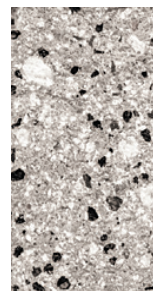
Matrix #1636



Matrix #1983



Matrix #2088



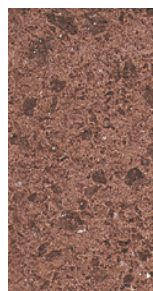
Matrix #2922



Matrix #1428



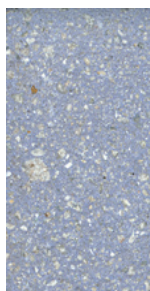
Matrix #2115



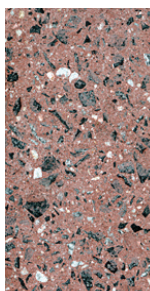
Matrix #2156



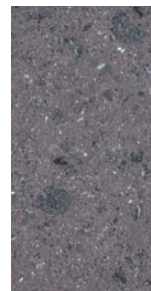
Matrix #1930



Matrix #1537



Matrix #2659



Matrix #2835

Colors shown are custom colors. Please contact a Hanover® Sales Representative for pricing.

* Colors are available with a Heavy Tudor®, Ground or Ground Tudor® finish only.

PLEASE NOTE: Additional custom blending is available on special order when quantities permit. The color photos shown in this catalog were prepared with great concern for accuracy. However, it is suggested that actual samples be requested before specifying. Due to the natural variance of the raw materials used, pavers can be expected to differ slightly from sample to actual product. It is recommended that the pavers be cleaned after the installation is finished. Please contact our representatives for product suggestions.

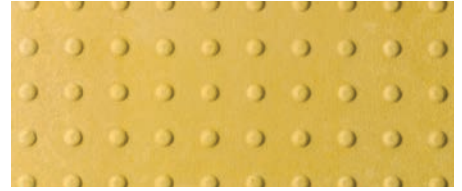
Manufactured in accordance with the requirements set forth in the 2010 American Disabilities Act (ADA) Standard, Hanover's Detectable Warning® Paver is fabricated with a non-slip texture applied to the surface of the paver. Detectable Warning® Pavers are stocked in two sizes and three colors. Other colors and Tudor® finish are available on special request when quantities permit.



Charcoal



Red 15



Yellow (#M1517) (11 3/4" x 11 3/4" x 2" only)

PLEASE NOTE: Tudor® finish is available on special order when quantities permit.

PLEASE NOTE : The color photos shown in this catalog were prepared with great concern for accuracy. However, it is suggested that actual samples be requested before specifying. Due to the natural variance of the raw materials used, products can be expected to differ slightly from sample to actual product. It is recommended that the products be cleaned after the installation is finished. Please contact our representatives for product suggestions.

Hanover® Architectural Products reserves the right to modify, alter or discontinue the texture, color, content, shape or size of its products or any product line at any time for any reason.

CONTACT US for product details and information. We invite you to call us at 800-426-4242 to discuss your project, visit our web site www.hanoverpavers.com to download current catalogs and more detailed product information, or request our complete product brochures and samples.

©1971-2019 Hanover® Architectural Products

HANOVER®
Architectural Products

5000 Hanover Road, Hanover, PA 17331
717.637.0500 • fax 717.637.7145
www.hanoverpavers.com